

BALDOR[®] • RELIANCE 

Product Information Packet

ERM3154

1.5HP,1760RPM,3PH,60HZ,56H,3526M,OPEN,F1

| Part Detail | | | | | | | |
|-------------|--------|-------------|------------|-------------|--------|---------------|------------|
| Revision: | G | Status: | PRD/A | Change #: | | Proprietary: | No |
| Type: | AC | Elec. Spec: | 35WGM493 | CD Diagram: | CD0005 | Mfg Plant: | |
| Mech. Spec: | 35E411 | Layout: | 35LYE411 | Poles: | 04 | Created Date: | 09-30-2014 |
| Base: | RS | Eff. Date: | 11-27-2018 | Leads: | 9#18 | | |

| Specs | | | |
|---------------------------------|-------------------------|--------------------------------|-------------------|
| Catalog Number: | ERM3154 | Heater Indicator: | No Heater |
| Enclosure: | OPEN | Insulation Class: | F |
| Frame: | 56H | Inverter Code: | Inverter Ready |
| Frame Material: | Steel | KVA Code: | L |
| Output @ Frequency: | 1.500 HP @ 60 HZ | Lifting Lugs: | No Lifting Lugs |
| Synchronous Speed @ Frequency: | 1800 RPM @ 60 HZ | Locked Bearing Indicator: | No Locked Bearing |
| Voltage @ Frequency: | 208.0 V @ 60 HZ | Motor Lead Quantity/Wire Size: | 9 @ 18 AWG |
| | 230.0 V @ 60 HZ | Motor Lead Exit: | Terminal Panel |
| | 460.0 V @ 60 HZ | Motor Lead Termination: | Flying Leads |
| XP Class and Group: | None | Motor Type: | 3526M |
| XP Division: | Not Applicable | Mounting Arrangement: | F1 |
| Agency Approvals: | UR | Power Factor: | 73 |
| | CSA | Product Family: | General Purpose |
| Auxillary Box: | No Auxillary Box | Pulley End Bearing Type: | Ball |
| Auxillary Box Lead Termination: | None | Pulley Face Code: | Resilient Mount |
| Base Indicator: | Resilient | Pulley Shaft Indicator: | Standard |
| Bearing Grease Type: | Polyrex EM (-20F +300F) | Rodent Screen: | None |
| Blower: | None | Shaft Extension Location: | Pulley End |

| | | | |
|---------------------------------------|---------------------------|------------------------------------|---------------------|
| Current @ Voltage: | 2.200 A @ 460.0 V | Shaft Ground Indicator: | No Shaft Grounding |
| | 4.400 A @ 230.0 V | Shaft Rotation: | Reversible |
| | 4.500 A @ 208.0 V | Shaft Slinger Indicator: | No Slinger |
| Design Code: | B | Speed Code: | Single Speed |
| Drip Cover: | No Drip Cover | Motor Standards: | NEMA |
| Duty Rating: | CONT | Starting Method: | Direct on line |
| Electrically Isolated Bearing: | Not Electrically Isolated | Thermal Device - Bearing: | None |
| Feedback Device: | NO FEEDBACK | Thermal Device - Winding: | None |
| Front Face Code: | Terminal Panel | Vibration Sensor Indicator: | No Vibration Sensor |
| Front Shaft Indicator: | None | Winding Thermal 1: | None |
| | | Winding Thermal 2: | None |

| Nameplate NP3155L | | | | | | | | | | |
|-------------------|--------------|--|--|------|------|----|-----|----------------|----|---|
| CAT.NO. | ERM3154 | | | | | | | | | |
| SPEC. | 35E411M493G1 | | | | | | | | | |
| HP | 1.5 | | | | | | | | | |
| VOLTS | 208-230/460 | | | | | | | | | |
| AMP | 4.5-4.4/2.2 | | | | | | | | | |
| RPM | 1760 | | | | | | | | | |
| FRAME | 56H | | | | | HZ | 60 | | PH | 3 |
| SER.F. | 1.15 | | | CODE | L | | DES | B | CL | F |
| F.L. AVG. EFF. | 86.5 | | | PF | 73 | | | | | |
| RATING | 40C AMB-CONT | | | | | | | | | |
| CC | | | | | | | | USABLE AT 208V | | |
| DE | 6203 | | | ODE | 6203 | | | | | |
| ENCL | OPEN | | | SN | | | | | | |
| | | | | | | | | | | |

| Parts List | | |
|-------------|--|----------|
| Part Number | Description | Quantity |
| SA288614 | SA 35E411M493G1 | 1.000 EA |
| RA274803 | RA 35E411M493G1 | 1.000 EA |
| 11XW0832G06 | #8-32 X 3/8, TAPTITE II, HEX WSHR SLTD | 1.000 EA |
| LD5000A01 | LEAD ASSY, ML1400DF14 7" RING TRM EA END | 1.000 EA |
| 51XW1032A06 | 10-32 X .38, TAPTITE II, HEX WSHR SLTD S | 2.000 EA |
| HW1003A10 | WASHER, #10 EX TH LK, ZN X | 2.000 EA |
| 35EP3202A01 | STD OPEN FR EP - RESILIENT MTD | 1.000 EA |
| RM1000A02 | CUSHION RING, MODEL 35 SAME AS A07 | 1.000 EA |
| HA6005A01 | CLAMP, BASE | 2.000 EA |
| 51XN1032A20 | 10-32 X 1 1/4 HX WS SL SR | 1.000 EA |
| 51XN1032A20 | 10-32 X 1 1/4 HX WS SL SR | 1.000 EA |
| XY1032A02 | 10-32 HEX NUT DIRECTIONAL SERRATION | 1.000 EA |
| 51XW0832A07 | 8-32 X .44, TAPTITE II, HEX WSHR SLTD SE | 3.000 EA |
| HW5100A03 | WAVY WASHER (W1543-017) | 1.000 EA |
| 35EP3203A01 | STD PU EP, OPEN RESIL MTG | 1.000 EA |
| XY1032A02 | 10-32 HEX NUT DIRECTIONAL SERRATION | 4.000 EA |
| RM1000A02 | CUSHION RING, MODEL 35 SAME AS A07 | 1.000 EA |
| HA6005A01 | CLAMP, BASE | 2.000 EA |
| XY1032A02 | 10-32 HEX NUT DIRECTIONAL SERRATION | 1.000 EA |
| 35CB4500SP | TERMINAL BOX LID STAMPED | 1.000 EA |
| 51XW0832A07 | 8-32 X .44, TAPTITE II, HEX WSHR SLTD SE | 2.000 EA |
| HW2501D13 | KEY, 3/16 SQ X 1.375 | 1.000 EA |
| HA7000A04 | KEY RETAINER 0.625 DIA SHAFTS | 1.000 EA |
| 85XU0407S04 | 4X1/4 U DRIVE PIN STAINLESS | 2.000 EA |

| Parts List (continued) | | |
|-------------------------------|--|-----------------|
| Part Number | Description | Quantity |
| SP1003A01 | TERM. BOARD, MODE 35 SW X H-23655 | 1.000 EA |
| MJ1000A02 | GREASE, MOBIL POLYREX EM - 124047 | 0.050 LB |
| MG1000Y03 | MUNSELL 2.53Y 6.70/ 4.60, GLOSS 20, | 0.017 GA |
| 35BA4002B01 | RESILIENT BASE, STAMPED | 1.000 EA |
| HA3100A18 | THRUBOLT 10-32 X 9.250 | 4.000 EA |
| LC0005E01 | CONN.DIA./WARNING LABEL (LC0005/LB1119N) | 1.000 EA |
| NP3155L | ALUM SUPER-E UL CSA CC "SEMS" | 1.000 EA |
| 35PA1066 | PKG GRP, PRINT PK1008A06 | 1.000 EA |
| MN416A01 | TAG-INSTAL-MAINT no wire (1200/bx) 3/19 | 1.000 EA |

AC Induction Motor Performance Data

Record # 32424 - Typical performance - not guaranteed values

| | | |
|-------------------------------|--------------------|------------------------|
| Winding: 35WGM493-R001 | Type: 3526M | Enclosure: TEFC |
|-------------------------------|--------------------|------------------------|

| Nameplate Data | | | | 460 V, 60 Hz: High Voltage Connection | |
|-----------------------|--------------|--------------|----|--|--------------------------|
| Rated Output (HP) | 1.5 | | | Full Load Torque | 4.47 LB-FT |
| Volts | 208-230/460 | | | Start Configuration | direct on line |
| Full Load Amps | 4.5-4.4/2.2 | | | Breakdown Torque | 19.2 LB-FT |
| R.P.M. | 1760 | | | Pull-up Torque | 9.4 LB-FT |
| Hz | 60 | Phase | 3 | Locked-rotor Torque | 13.4 LB-FT |
| NEMA Design Code | B | KVA Code | L | Starting Current | 18.3 A |
| Service Factor (S.F.) | 1.15 | | | No-load Current | 1.37 A |
| NEMA Nom. Eff. | 86.5 | Power Factor | 73 | Line-line Res. @ 25°C | 10.66 Ω |
| Rating - Duty | 40C AMB-CONT | | | Temp. Rise @ Rated Load | 44°C |
| S.F. Amps | | | | Temp. Rise @ S.F. Load | 53°C |
| | | | | Locked-rotor Power Factor | 52 |
| | | | | Rotor inertia | 0.154 LB-FT ² |

Load Characteristics 460 V, 60 Hz, 1.5 HP

| % of Rated Load | 25 | 50 | 75 | 100 | 125 | 150 | S.F. |
|-----------------|--------|--------|--------|--------|--------|--------|------|
| Power Factor | 31 | 51 | 65 | 73 | 79 | 83 | 77 |
| Efficiency | 75.9 | 84.5 | 86.8 | 87.1 | 86.4 | 85.4 | 86.7 |
| Speed | 1790.6 | 1781.1 | 1770.7 | 1760.1 | 1748.1 | 1734.9 | 1753 |
| Line amperes | 1.44 | 1.61 | 1.86 | 2.19 | 2.58 | 2.98 | 2.42 |

Performance Graph at 460V, 60Hz, 1.5HP Typical performance - Not guaranteed values

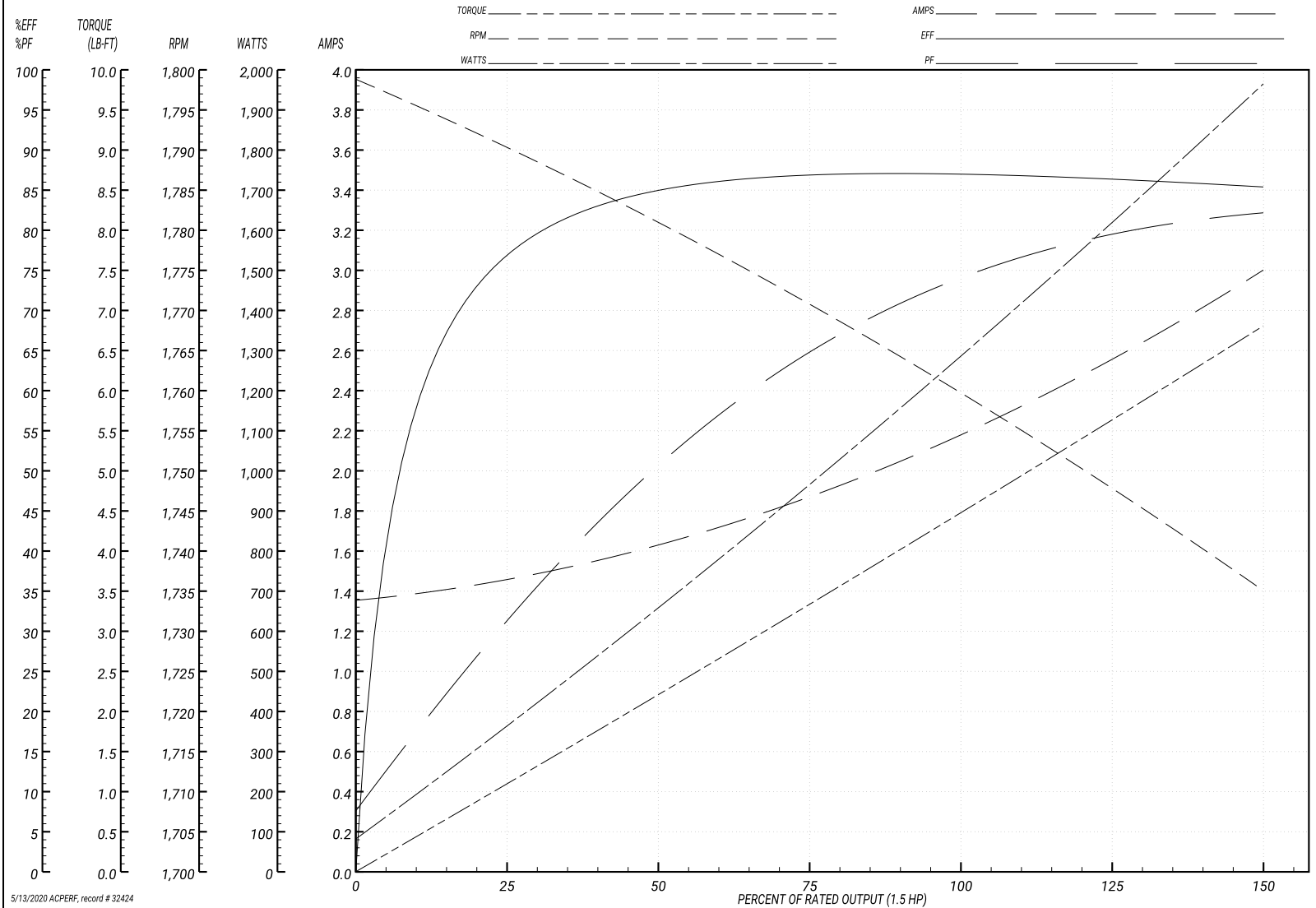
ABB Motors and Mechanical Inc.

WINDING # 35WGM493

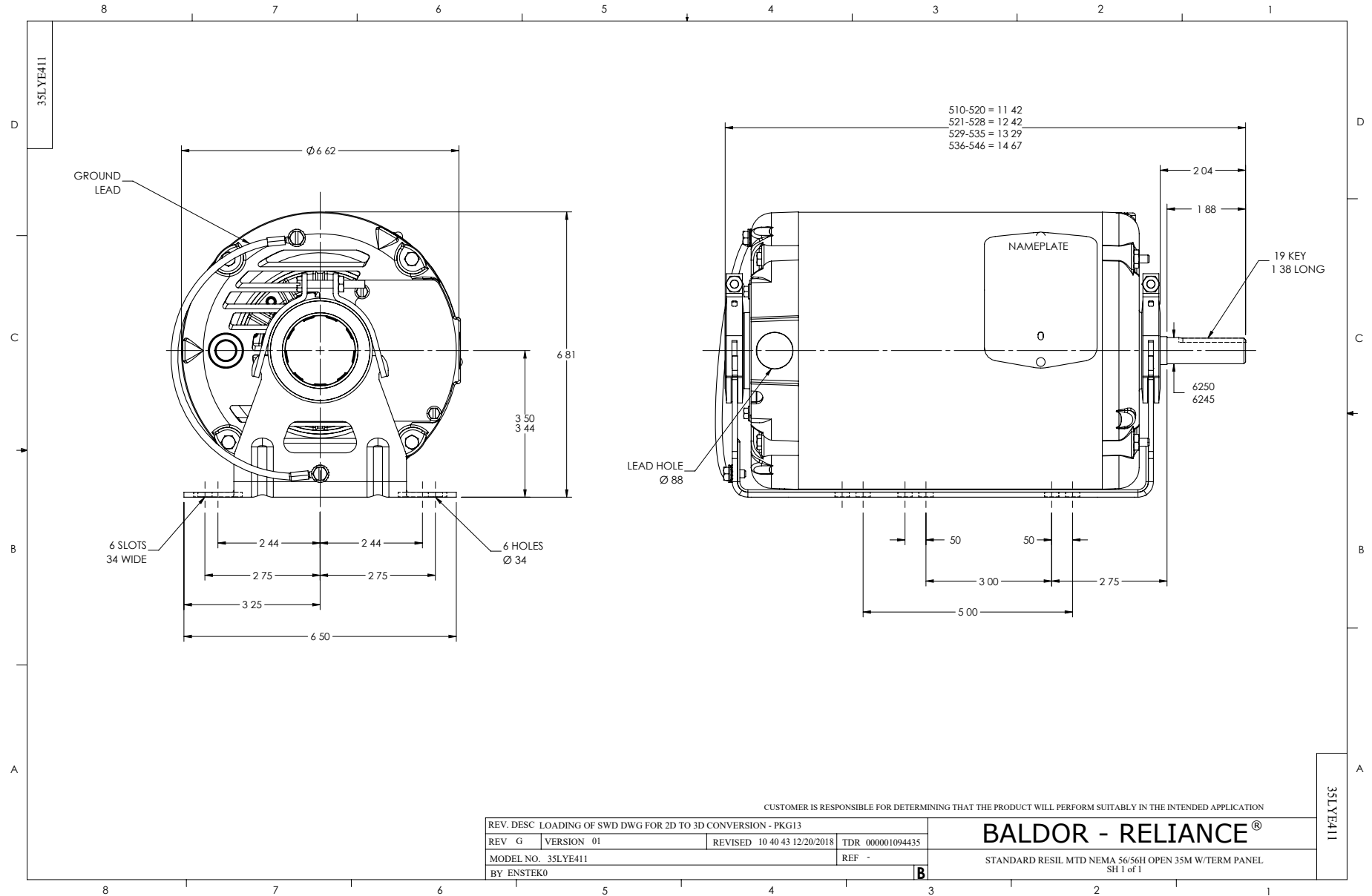
Typical performance - not guaranteed values.

1.5 HP 3 PH 60 HZ 1760 RPM 460 V 3526M

TORQUES(LB-FT): PO=19.2 PU=9.4 LR=13.4 LRA=18.3



5/13/2020 ACPERF, record # 32424



CD0005



LOW VOLTAGE
(2Y)



LINE

HIGH VOLTAGE
(1Y)



LINE

NOTES:

1. INTERCHANGE ANY TWO LINE LEADS TO REVERSE ROTATION.
2. OPTIONAL THERMOSTATS ARE PROVIDED WHEN SPECIFIED.
3. ACTUAL NUMBER OF INTERNAL PARALLEL CIRCUITS MAY BE A MULTIPLE OF THOSE SHOWN ABOVE.
4. LEAD COLORS ARE OPTIONAL. LEADS MUST ALWAYS BE NUMBERED AS SHOWN.

REV. DESC: REVISE TO SHOW OPTIONAL COLORS

REV. LTR: E BY: JLP

REVISED: 01/19/99 10:15

TDR: 0171435

9000D

FILE: AAA00005140

MDL: -

MTL: -

BALDOR ELECTRIC Co.

3PH, DV, 9 LEADS

CD0005